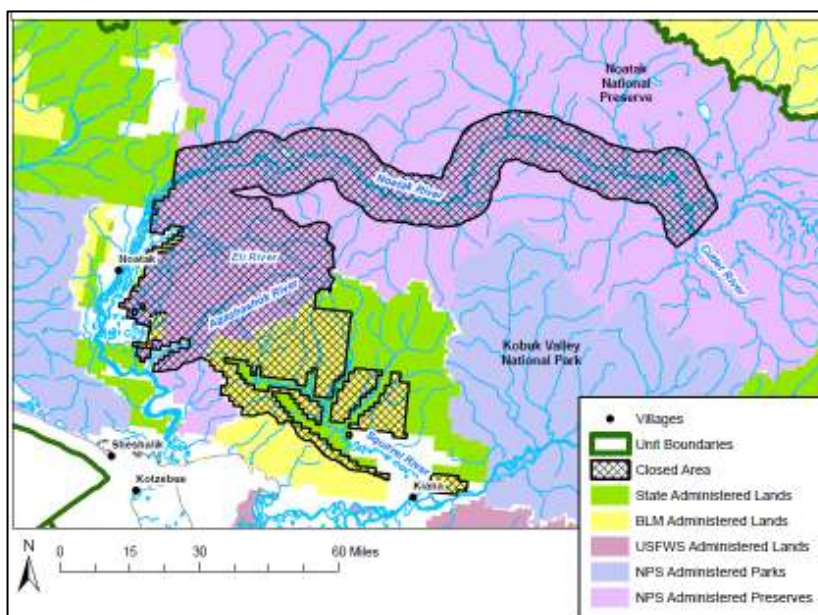


Information on Closures and Land Restrictions for Caribou & Moose Hunting in Unit 23

This fact sheet summarizes closures and other land restrictions for hunting in Unit 23. Some of these apply only to non-local hunters and commercial services, while others apply to everyone. It is your responsibility to know which of these apply to you. Several of these restrictions have been put in place to address local communities' concerns about the impacts of non-local hunters.

Native Corporation Lands (NANA and KIC)

Access to these private lands is controlled by the land owners. Non-shareholders cannot hunt on these lands without permission from the proper corporation. Learn more at <https://www.nana.com/about-us/lands/>



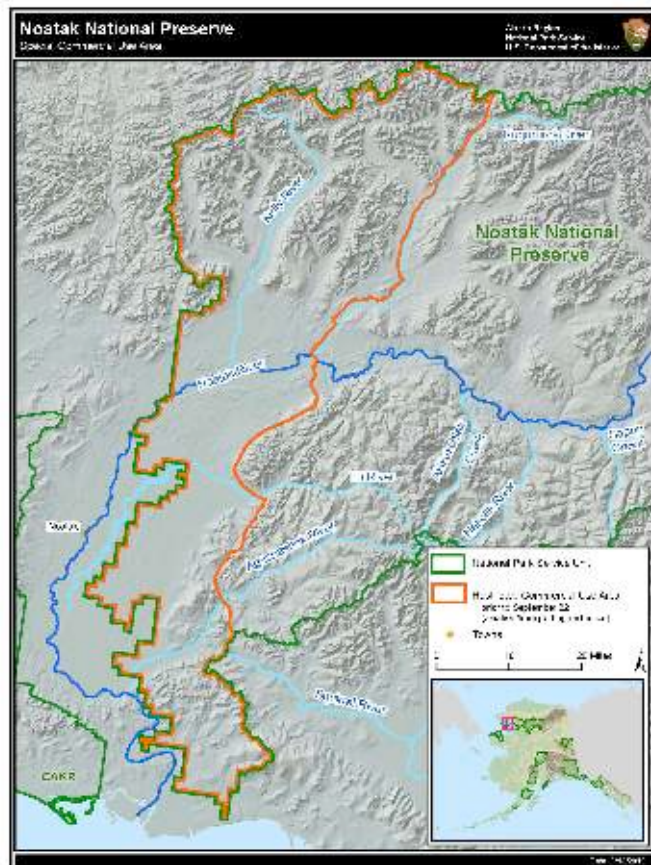
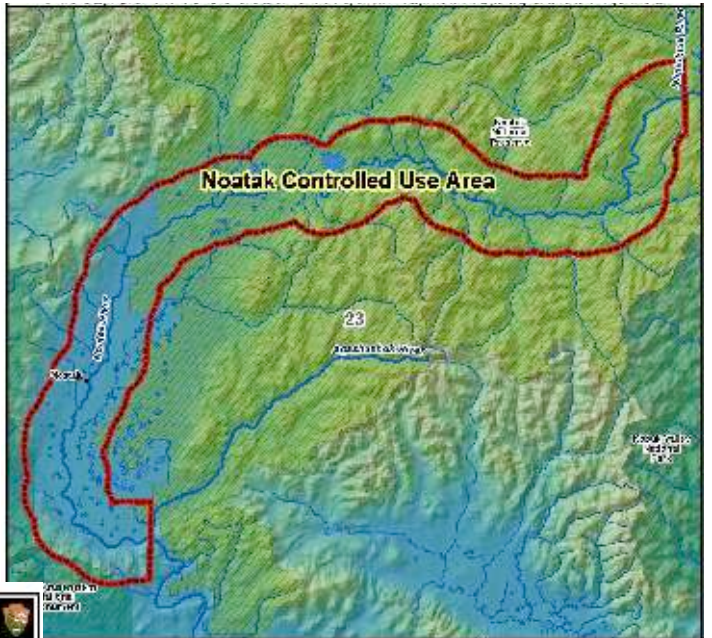
Federal Caribou Hunting Closure (Federal Subsistence Board)

Only Federally qualified subsistence users may hunt for caribou on Federal public lands within a 10 mile wide corridor (5 miles either side) along the Noatak River from the western boundary of the Noatak National Preserve upstream to the confluence with the Cutler River; within the northern and southern boundaries of the Eli and Agashashok (Aggie) River

Drainages, respectively; and within the Squirrel River drainage (black lined area above). For caribou in Unit 23, a "Federally qualified subsistence user" is a person who has lived in Alaska for at least 12 months and has their primary, permanent place of residence in Unit 23 and several adjoining areas, including Units 22, 26A, most of Units 21D and 24, and Galena

Noatak Controlled Use Area (State of Alaska)

A corridor extending five miles on either side of, and including, the Noatak River beginning at the mouth of the Agashashok (Aggie) River, and extending upstream to the mouth of the Nimiuktuk River. This area (red outlined area, right) is closed from Aug. 15 – Sept. 30 to the use of aircraft in any manner for big game hunting, including transportation of big game hunters, their hunting gear, and/or parts of big game; however this does not apply to the transportation of big game hunters or parts of big game to and between publicly owned airports.



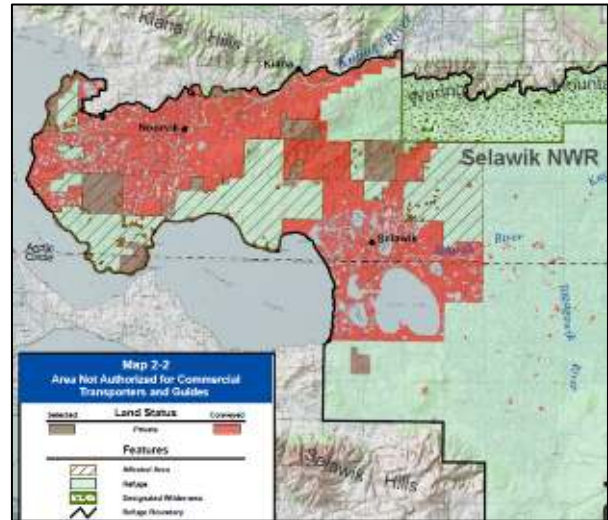
Noatak National Preserve Special Commercial Use Area (National Park Service)

This “delayed entry” area managed by the National Park Service prohibits commercial use operators from dropping off or picking up non-Federally qualified subsistence caribou hunters within the Restricted Commercial Use Area (red outlined area, left) in the western Noatak National Preserve prior to September 22nd, unless otherwise authorized by the Superintendent.

Restricted Parklands (National Park Service) Cape Krusenstern National Monument and Kobuk Valley National Park are only open to hunting of any kind by residents of the NANA region (local resident zone communities).

Kobuk/Selawik Delta Areas Not Authorized for Commercial Use (U.S. Fish & Wildlife Service)

Commercial guides and transporters are prohibited (through permit requirements) from using refuge lands in the western portion of Selawik National Wildlife Refuge, where there is mixed land status and greater subsistence use (areas with diagonal lines, right).



Non-resident Moose Season Closed (State of Alaska)

There is no open season in Unit 23 for moose hunting by non-Alaska residents.

State of Alaska Hunting Regulations – <http://www.adfg.alaska.gov>

Federal Subsistence Hunting Regulations – <http://www.doi.gov/subsistence>

Need help hunting?

- In state hunts, a proxy hunter may hunt moose or caribou for elders or disabled people – contact ADFG for a proxy hunting authorization.
- In federal hunts, you may designate another hunter to harvest on your behalf, but a permit is required beforehand - contact Brittany at Selawik Refuge.
- The Maniilaq Hunter Support Program can help with gas and other costs. Contact your local tribal office.

Contact Us:

AK Dept. of Fish & Game Kotzebue office: 442-3420	Alaska Wildlife Troopers Trooper Cantine: 442-3241	NANA Trespass / Lands Damon Schaeffer: 442-8103
US Fish & Wildlife Service Selawik Refuge Kotzebue office: 442-3799	National Park Service	Maniilaq Natural Resources Cyrus Harris: 442-7914