



Title 9 Conditional Use Permit No.: 110-03-20

Date of Issue: June 4, 2020

Permit Expires: December 31, 2022

Permit Issued By:

Northwest Arctic Borough
Planning Department
c/o John Chase
PO Box 1110
Kotzebue, AK 99752
Tel 907.442.8212 / 800.478.1110 extension 112
Fax 907.442.3740
jchase@nwabor.org



Permittee:

Ambler Metals LLC
1941 Sanduri St.
Fairbanks, AK 99701
Tel 604.638.0644
info@amblermetals.com
www.amblermetals.com

Permittee Contact Information:

Cal Craig
1941 Sanduri St.
Fairbanks, AK 99701
Tel 907.317.7383
cal.craig@amblermetals.com

Project Description:

Ambler Metals LLC (METALS) proposes to conduct ongoing **mineral exploration activities** (to include drilling, geophysical surveys, geologic mapping and sampling), which will be helicopter-supported on state, patented, and NANA-owned lands. METALS also proposes to renew their **landfill and gravel extraction** activities. Mineral exploration, landfill and gravel extraction activities will support METALS's Upper Kobuk Mineral Projects (UKMP), north of the community of Kobuk in the southern Brooks Range.

This Conditional Use Permit will allow METALS to continue to *operate a landfill* near the Bornite Camp/Airstrip and *extract sand and gravel* from six (6) material sources. The material extracted will be used for road maintenance work and minor camp activities. The proposed start date is June 1, 2020, and will be completed by October 31, 2022.

The following Uses and Zoning Districts make up this project:

1. Village District:



- Temporary use of airstrips—Minor Use
- 2. Subsistence Conservation District:**
 - Mineral exploration—Major Use
 - Bulk fuel storage (660 gallons or more)—Conditional Use
 - Temporary use of airstrips—Minor Use
 - Archaeological surveys and excavation or other activities on a parcel by a professional archaeologist or other person that are likely to disturb archaeological or historic resources—Major Use
 - Gravel extraction—Conditional Use
 - Landfills—Conditional Use
 - Roads—Conditional Use
- 3. General Conservation District:**
 - Mineral Exploration—Minor use
 - Bulk fuel storage (660 gallons or more)—Conditional Use
 - Temporary use of airstrips—Minor Use
 - Exploration, assessment of examination of a parcel by a professional archaeologist or other qualified person—Major Use

This Title 9 Conditional Use Permit #110-03-20 consolidates Title 9 Permits #105-03-16 (landfill/gravel) previously held by NovaCopper US Inc. and #106-03-19 (current mineral exploration) previously held by Trilogy Metals Inc., the parent company of NovaCopper US Inc. This new combined permit (#110-03-20) will be held by Ambler Metals LLC, a newly formed Joint Venture company owned by South32 and Trilogy Metals Inc. Project activities will remain the same.

Specific details of the project are contained in the permit application (20-02-110) and documents submitted by METALS to the Borough Planning Department. These documents are incorporated into the Borough's administrative record. Project Activities are described below.

Project Location:

Project activities for the UKMP take place in the Village, Subsistence, and General Conservation districts.

METALS will be conducting mineral exploration activities at both the Arctic and Bornite deposits and plan to base their operations out of the Bornite Camp. METALS will be using both the Bornite and Dahl Creek Airstrips for their exploration activities.

Project activities are located at the following Townships:

- **Arctic Deposit** is located at T 20/21 N, R 11 E, Section 3, 4 (General Conservation)
- **Bornite Deposit** is located at T 19 N, R 9 E, Section 4, 5, 8 (Subsistence Conservation)



- **Sunshine Deposit** is located at T 21 N , R 8 E, Sections 15 (Subsistence Conservation), 16 (General Conservation)
- **Cliff DH Deposit** is located at T 22 N, R 10 E, Sections 16 (General Conservation), 21 (Subsistence Conservation)
- **Bornite Camp** is located at T 19 N, R 9 E, Section 8 (Subsistence Conservation)
- **Bornite Airstrip** is located at T 19 N, R. 9 E, Section 5 (Subsistence Conservation)
- **Dahl Creek Airstrip** is located at T 18 N, R. 9 E, Section 21 (Village District)

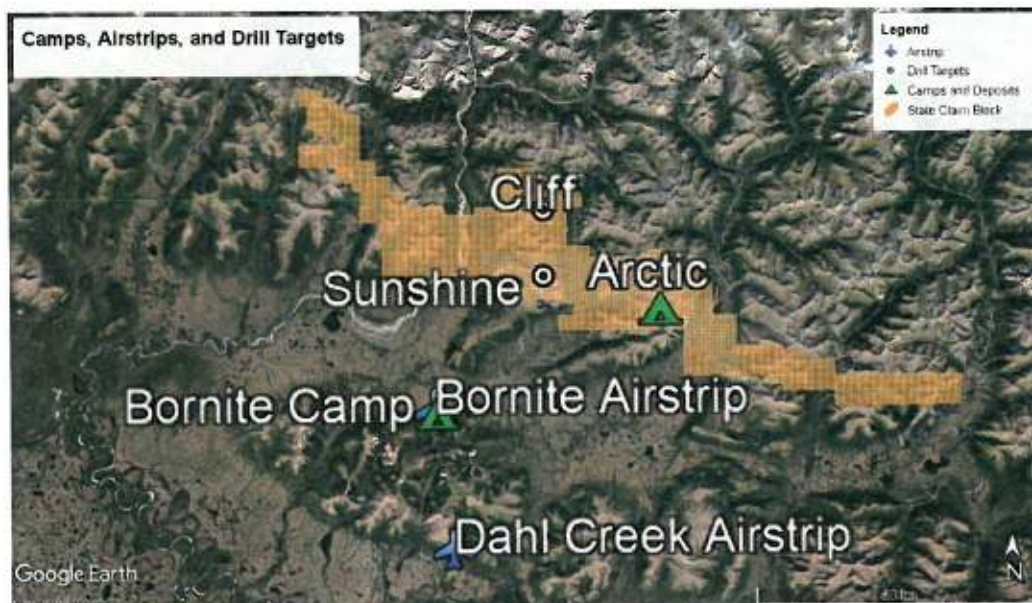


Figure 1. METALS' Upper Kobuk Mineral Projects—Camps, Airstrips, and Drill Targets

Mineral Exploration:

The UKMP activities for this permit will consist of approximately 150 drill holes in the Arctic, Bornite, Sunshine, and Cliff DH deposits. The approximate number of holes for each deposit:

- 60 holes at Arctic Deposit
- 60 holes at Bornite Deposit
- 30 holes in Sunshine and Cliff DH deposits

Exploration drilling will be done by helicopter and ground-supported diamond core drill rigs. Each drill rig will be supported by a water pump that provides water used in the drilling operation. Shallow geotechnical drilling will be done by helicopter and ground supported geotechnical rigs using either water for drilling or an air compressor.

The drill plan includes using five drills, two (2) DuraLite 1400's and three (3) EF-75's supplied by Major Drilling and Tuuq Drilling or equivalent.

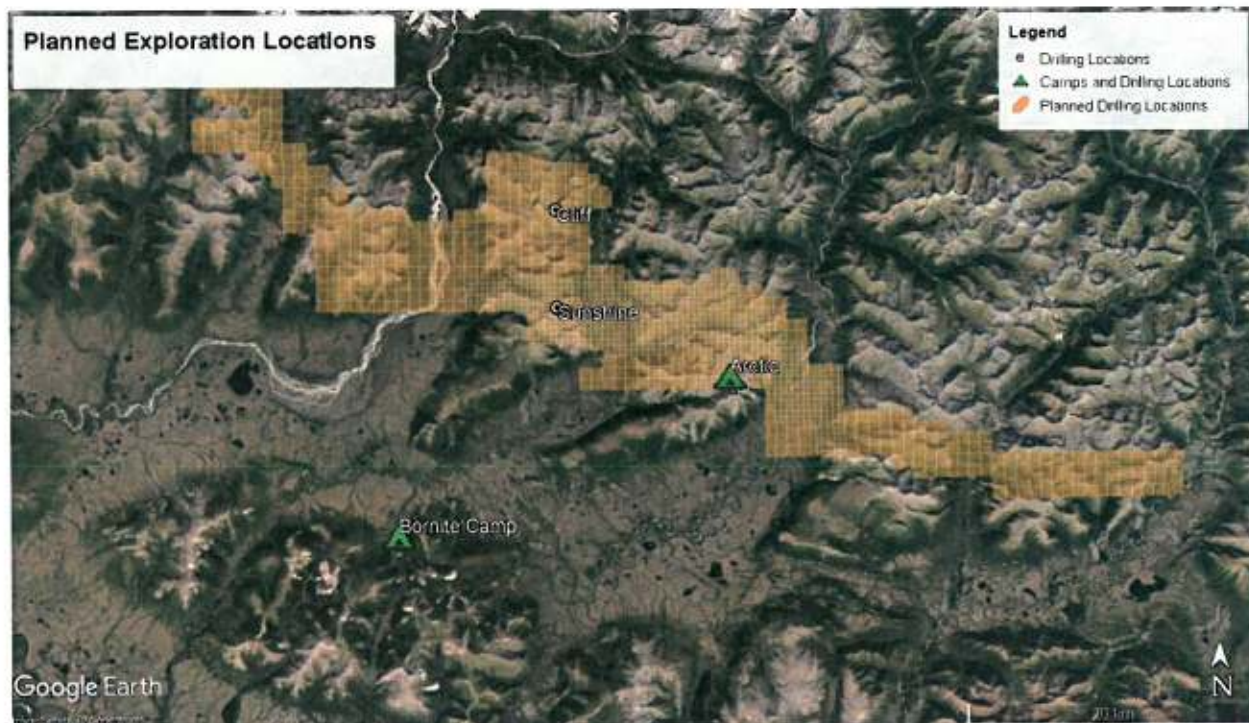


Figure 2. Planned exploration locations

Each drill hole is about between 3 inches and 8 inches in diameter. The depth of each hole is shallow (maybe 100-200 feet) to deep (3,000 to 4,000 feet). Each hole is drilled off of a wooden pad—See Figure 3 on page 5. The area around the pad gets cleared of taller vegetation like trees and brush, usually about 40ftx40ft. The drill gets set up on the pad and a crew of 2-4 drillers operates the drill—See Figure 4 on page 5.



Figure 3. Drill pad example



Figure 4. Drill



Figure 5. Finished drill hole

When the drilling is done, the hole is plugged with clay and cement, and then the drill and pad are removed. See Figure 5 above.

Air Strips:

METALS will be using two (2) airstrips to support their UKMP activities: The Bornite and Dahl Creek Airstrips. They have been used in the past and will continue to support METALS' UKMP activities.

- Bornite Airstrip is approximately one (1) mile from the Bornite Camp and is used to bring in supplies, store fuel (Jet A), stage equipment, and transport supplies and personnel to the UKMP Claims Block
- Dahl Creek Airstrip is adjacent to the Dahl Creek Camp and is used to bring in supplies, store fuel (Jet A), stage equipment, and transport supplies and personnel to the Bornite Camp and the UKMP Claims Block

Bulk Fuel Storage:



METALS will be storing approximately 27,000 gallons of fuel. Bulk fuel will be stored at the following locations:

- Bornite Airstrip—up to 15,000 gallons
- Dahl Creek Airstrip—up to 5,000 gallons
- Bornite Camp—up to 7,000 gallons

Bulk fuel will be stored inside secondary containment at the airstrips with at least 110% capacity. The **Bornite Airstrip** fuel storage consists of two (2) 5,000 gallon double-walled Flameshield tanks. The bulk fuel storage at **Dahl Creek Airstrip** consists of one 5,000 gallon double-walled Flameshield tanks. Additionally, one 2,000-gallon Jet A double-walled Flameshield tank is located at **Bornite Camp** along with 1,000 gallons of gasoline also in a containment.

Jet A (Diesel) fuel will be transported by fixed-wing aircraft from Fairbanks or Kotzebue to the **Dahl Creek Airstrip**. Fuel will be stored in double-walled tanks at the Dahl Creek Airstrip and transported primarily using a fuel truck to **Bornite Camp** and the **Bornite Airstrip**. Fuel will be transferred to drill sites using double-walled fly tanks with either a helicopter or truck.

Federal laws require a Spill Prevention, Control and Countermeasure Plan (SPCCP) be developed for any above ground fuel storage capacity greater than 1,320 gallons. The Borough, having more stringent standards, requires an SPCCP be prepared for bulk fuel storage greater than 660 gallons, as defined in Title 9.04.070 Definitions "Bulk fuel storage." The applicant has submitted an SPCCP, July 2018 and filed for the administrative record.

Archaeological Surveys:

Archeological surveys will be conducted by one or more professional archaeologists. The surveys will be conducted at and around the Arctic Deposit, the Bornite Deposit, and the Ambler Lowlands. The surveys will include digging test pits, looking for signs of historical use. If any historical uses areas are discovered, the artifacts will be left in place and the NAB Planning Department and NANA Regional Corporation will be notified.

The archaeologist will first conduct a data review of all known archaeological sites in or near the project areas. These known sites will be avoided. Next, the archaeologist will conduct a field survey, which consists of walking transects within a study area and digging test pits. If any artifacts or archaeological resources are found, they will be left in place and the NAB Planning Department and NANA Regional Corporation will be contacted.

Landfill:

METALS operates a landfill located near the Bornite Camp and Bornite Airstrip. The landfill was constructed in 2012 and is permitted by the State of Alaska Department of Environmental Conservation (DEC). The landfill is permitted through April 30, 2022 with the



DEC. DEC inspected METALS' Bornite Mine Class III Landfill and passed with a 100% inspection score in 2019. See **Figure 6** below to see the location of the landfill.

Inert solid waste, such as tires, metal, and incinerator ash are disposed of in the landfill.

The landfill includes six (6) cells, of which one has been used and covered, one is partially filled and covered for the winter, and four (4) are currently unexcavated. Each cell measures approximately 50'x50' by 15' deep.

The landfill is located at Township 19 N, Range 9 E, Section 5, Kateel River Meridian (67.076138°N, 156.943044°W).

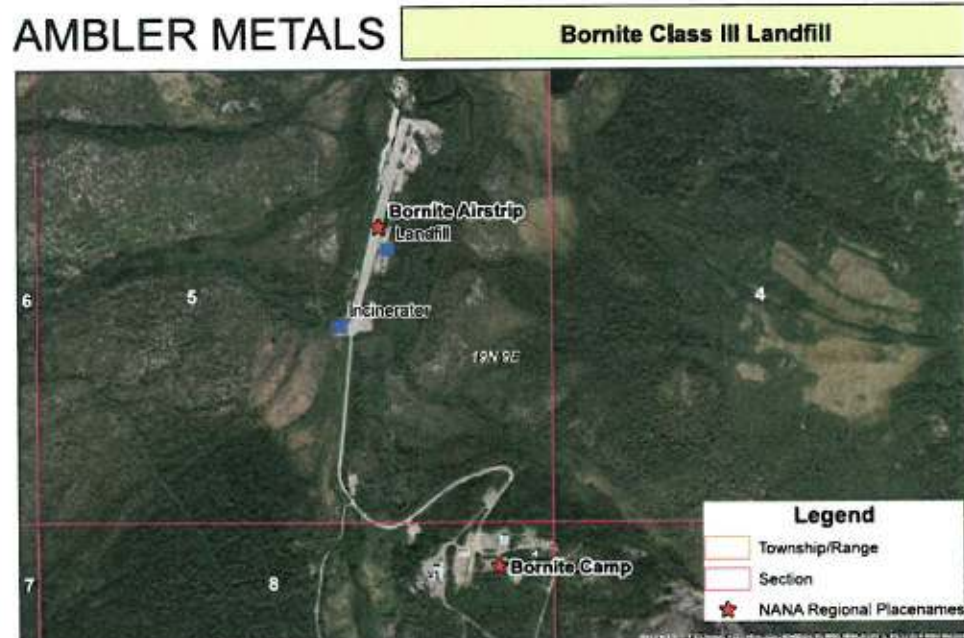


Figure 6. Bornite Landfill and Camp locations

Gravel Extraction:

A total of six (6) gravel pits are identified for the life of this permit. The gravel pits #2, #4, #5, #6, #7, and #9 are active material sources that will be used for gravel extraction. The total amount of material to be extracted under this permit is **30,000 cubic yards**. This material will be used for camp activities and road maintenance work as needed. Camp activities include building foundations, landings, ramps, leveling ground, and mud control.

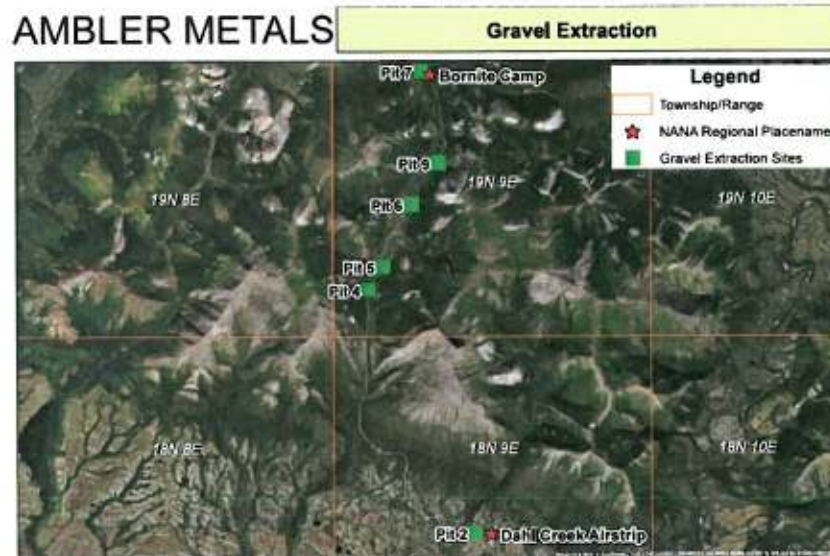


Figure 7. Gravel Pits #2, #4, #5, #6, #7, and #9

The material sources for gravel are at the following locations:

Site #2	N 66.94639°, W 156.93165°
Site #4	N 67.01541°, W 156.96892°
Site #5	N 67.02171°, W 156.95502°
Site #6	N 67.03180°, W 156.94915°
Site #7	N 67.06781°, W 156.94193°
Site #9	N 67.04294°, W 156.93025°

Volumes of material for Pits #2, #4, #5, #6, #7, and #9

The volume of usable gravel material in Pit #2 is estimated to be 10,000 cubic yards.

The volume of usable gravel material in Pit #4 is estimated to be 20,000 cubic yards.

The volume of usable gravel material in Pit #5 is estimated to be 25,000 cubic yards.

The volume of usable gravel material in Pit #6 is estimated to be 10,000 cubic yards and 2,000 cubic yards of rock.

The volume of usable sand material in Pit #7 is estimated to be 10,000 cubic yards.

The volume of usable gravel material in Pit #9 is estimated to be 2,000 cubic yards.

SITE PLAN

- The corners of the gravel pit are staked.
- Gravel will be extracted with an excavator or loader and hauled with a loader, dump truck, or equivalent.

RECLAMATION PLAN

- The slopes of the extraction pits will be re-sloped and left in a stable condition as stated in Northwest Arctic Borough Code 9.25.020.6.c.2. Stabilization and re-sloping will be done at the end of the field season in which the extraction took place.
- Drainage of the site is provided by percolation into the substrate.



-As gravel extraction in an ongoing resource, the site will not be seeded as part of the reclamation unless the pit is deemed to be closed to all future extraction. If a pit is deemed to be no longer a necessary extraction location, the site will be re-sloped and seeded using a native seed mixture.
-Stormwater best management practices will be used as needed to prevent stormwater discharges to water of the United States.

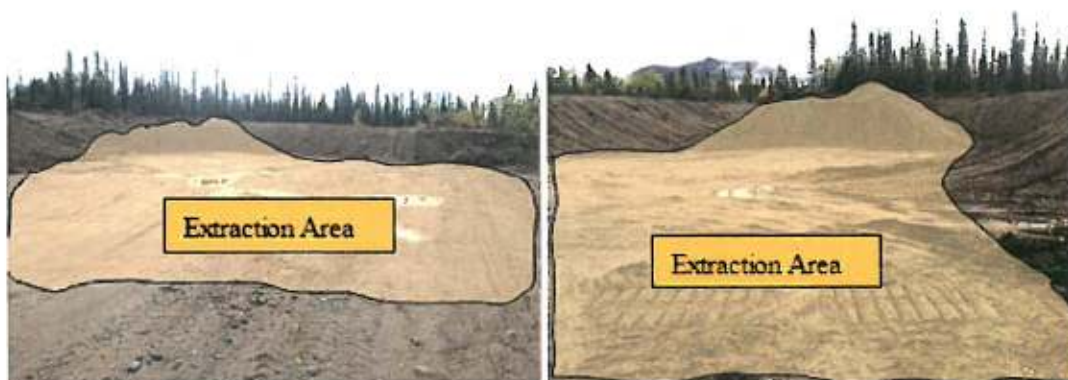


Figure 8. Site #2 Material Source



Figure 9. Site #4 Material Source

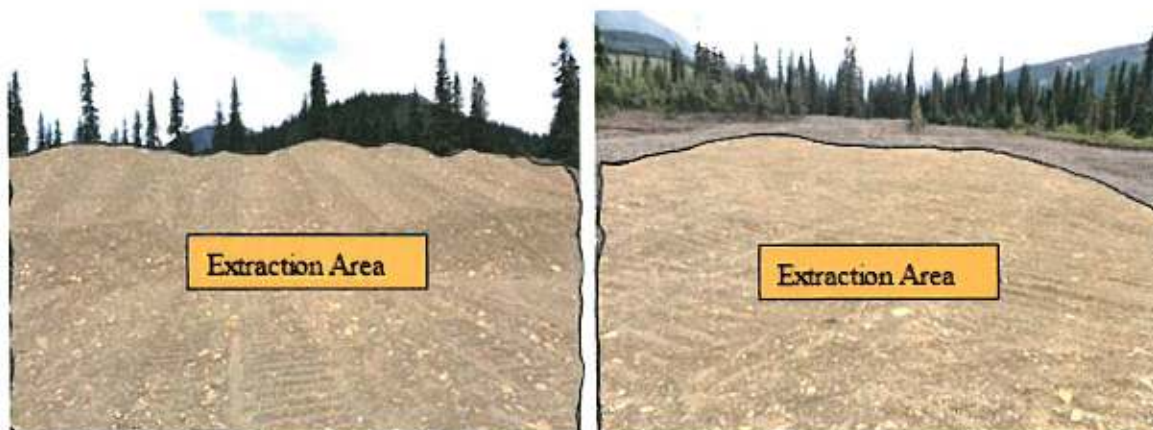


Figure 10. Site #5 Material Source

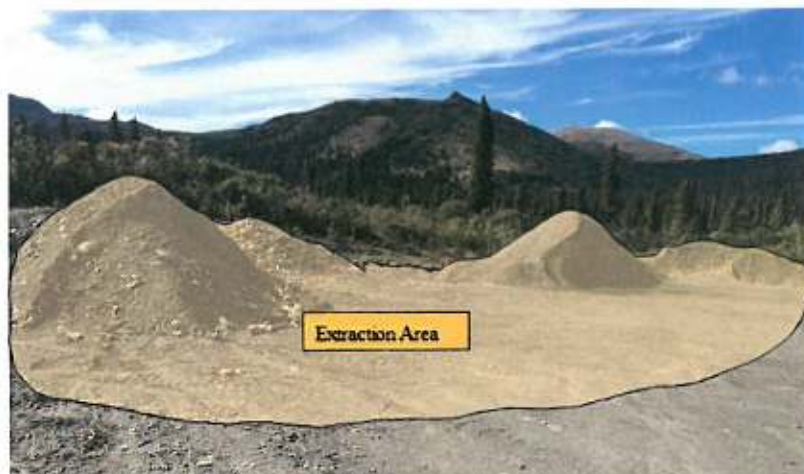


Figure 11. Site #6 Material Source



Figure 12. Site #7 Material Source



Figure 13. Site #9 Material Source

Roads:



Although no roads will be constructed for the life of this permit, road maintenance work will resume each season. Roadwork consists of grading, leveling, installing and replacing culverts, and covering geotextile fabric, all of which require gravel.

Current Approvals:

Activity	Agency	Number
Bornite Drilling	Department of Natural Resources	AHEA 2183
Arctic Drilling	Department of Natural Resources	AHEA 9785
District Drilling	Department of Natural Resources	AHEA 2882
Bornite Fish Habitat	Department of Fish and Game	FH16-III-0080
Arctic Fish Habitat	Department of Fish and Game	FH18-III-0064
District Fish Habitat	Department of Fish and Game	FH18-III-0121
Bornite Temporary Water Use	Department of Natural Resources	TWUA F16-053
Arctic Temporary Water Use	Department of Natural Resources	TWUA F17-023 and - 024
District Temporary Water Use	Department of Natural Resources	TWUA F18-082 and - 067
Mineral exploration	Norwest Arctic Borough	#106-03-19

Permit Authorization and Documentation:

METALS submitted a Title 9 Land Use Permit application (20-02-110) for the following Uses in the Village, Subsistence, and General Conservation Districts:

- Temporary use of airstrips,
- Mineral Exploration,
- Gravel extraction,
- Landfills,
- Airstrips,
- Bulk fuel storage,
- Roads,
- Archaeological surveys and excavation or other activities on a parcel by a professional archaeologist or other person that are likely to disturb archaeological or historic resources
- Exploration, assessment of examination of a parcel by a professional archaeologist or other qualified person

The Title 9 application was received on March 2, 2020. On April 28, 2020 the Borough Planning Department deemed the application was complete. The 20-day public comment period started May 8, 2020. There were no public comments.

Permit fees totaled \$1650 for the project. The applicant will pay the amount with a check.



Pursuant to Northwest Arctic Borough Code (NABC) 9.12.020, 9.12.030 and 9.12.050, the **Planning Director** has the authority to permit:

- Temporary use of airstrips—Minor Use in the Village District and General Conservation Districts
- Mineral exploration—Major Use in the Subsistence Conservation District and a Minor use in the General Conservation District
- Airstrips—Major Use in the Subsistence Conservation District
- Archaeological surveys and excavation or other activities on a parcel by a professional archaeologist or other person that are likely to disturb archaeological or historic resources—Major Use in the Subsistence Conservation District
- Exploration, assessment or examination of a parcel by a professional archaeologist or other qualified person—Major Use in the General Conservation District

Pursuant to Northwest Arctic Borough Code (NABC) 09.12.030 and 09.12.050, the **Planning Commission** has the authority to permit:

- Bulk fuel storage (660 gallons or more)—Conditional Use in the Subsistence Conservation and General Conservation Districts
- Gravel extraction—Conditional Use in the Subsistence Conservation District
- Landfills—Conditional Use in the Subsistence Conservation District
- Roads—Conditional Use in the Subsistence Conservation District

Permit Terms and Conditions:

1. Ambler Metals LLC (METALS) shall comply with the terms of the permission, permits and/or agreements granted by the federal government, State of Alaska, NANA Regional Corporation, Northwest Arctic Borough and other applicable agencies.
2. METALS shall comply with any and all applicable local, Borough, state and federal laws. The Borough reserves the right to conduct periodic inspections of the permitted operations as well as work with the permittee to observe operations and/or trips for permit compliance.
3. The Permittee is responsible for ensuring that all employees, contractors, sub-contractors, and any other persons working for the permittee and conducting activities allowed by this permit are familiar with and adhere to the conditions of this permit.
4. Mineral exploration activities are required to be sited, designed, constructed and operated in a manner that does not substantially interfere with the use of a site that is important for significant cultural uses or essential for transportation to subsistence use areas.
5. A cash bond or other surety satisfactory to the Borough shall be posted to assure performance under this permit in an aggregate amount equal to one hundred percent (100%) of the cost of any reclamation or mitigation required under this permit, inclusive of any state or federally required surety as provided under 9.08.040 A1 of the Borough



Code. Evidence of the existence of sufficient surety filed with another governmental entity may be accepted as a means of surety that fulfills this requirement.

6. The project will take place near a Borough-identified Subsistence Sub-District which is the Maniilaq River-Ambler Lowlands Area. All project uses and activities are to follow methods to minimize the likelihood of impacts to wildlife, waterfowl, and fish, including waterfowl staging areas, waterfowl nesting areas, and fish spawning areas. Uses and activities shall not have a significant adverse impact on fish, including fish in their juvenile and larval stages.
7. During the fall, winter and spring seasons, METALS or any project contractors shall not, during the migration of caribou, locate any operation and/or equipment so as to block or cause diversion of the migration of caribou. METALS and/or any project contractors shall cease any activity that may interfere with the seasonal spring and fall caribou migrations and/or caribou fall/winter/spring movements, such as marine, ground and airborne transports, ground and airborne surveys or movement of equipment, until such time as the migration or spring movements have cleared $\frac{3}{4}$ of a mile from the location of the project activity. Concern for human safety will be given special consideration when applying this policy.

As a general guideline, caribou migration means an area where 500 or more caribou are travelling or congregating. However, during the fall/winter/spring period of January through December, METALS shall take extra precautions to avoid deflecting even small numbers (e.g. group sizes of 5-10) of the first caribou moving through the area as these groups/bands set trails as "lead caribou" that subsequent caribou later follow during the migration. The intent of these guidelines are to ensure free passage of caribou through the area and to avoid impacting caribou and the communities that historically and currently depend upon it as well as preserving existing and important adjacent land uses. These guidelines may be revised based upon updated information and research (including local traditional knowledge).

8. METALS shall not, during the migration of caribou, locate any operation and/or equipment so as to block or cause diversion of the migration of caribou, and shall cease any activity that may interfere with the migration, such as airborne transports, or movement of equipment, until such time as the migration has been completed.
9. All project activities shall utilize measures to avoid or minimize disrupting wildlife and bird migration, or subsistence activities including fishing, trapping, waterfowl hunting, egg gathering, berry picking and caribou hunting. The applicant will ensure reasonable access to subsistence users to subsistence resources.
10. All air (helicopter and airplane) traffic and ground transportation measures shall utilize measures to avoid disrupting wildlife and bird migration or subsistence activities by, as safety permits, flying around spotted herds or flocks, flying at altitudes high enough to



reduce noise and disturbance, limiting the numbers of flights per day, or temporarily suspending operations. The Title 9 Administrator/Planning Director may impose specific requirements as circumstances may warrant.

11. All air (helicopter and airplane) traffic and ground transportation measures shall utilize measures to avoid disrupting wildlife and bird migration or subsistence activities by, as safety permits, flying around spotted herds or flocks, flying at altitudes high enough to reduce noise and disturbance, limiting the numbers of flights per day or temporarily suspending operations.

To minimize disturbance to wildlife during air transport, it is recommended that all aircraft maintain a minimum altitude of two thousand (2,000) feet above ground level except as required for takeoff, landing, emergency and/or weather. Take off, landing and transport drop offs should avoid proximity to a migrating caribou herd and especially to avoid interdicting the lead of a caribou herd. METALS shall minimize the number of helicopter flights to reduce disturbance.

To minimize disturbance to animals on local roads, vehicles shall maintain a safe speed within established speed limits. All equipment and vehicles are to be maintained to eliminate or minimize any excessive noise. Equipment and vehicles must be monitored and be inspected daily for functioning sound suppression.

The Administrator may impose specific requirements as circumstances may warrant.

12. All vehicles shall be operated in a manner such that the vegetative mat of the tundra is not disturbed. Vehicles shall not be abandoned. Vehicles must avoid areas where species that are sensitive to noise or movement are concentrated.
13. All trash and human waste generated at the sites must be properly disposed in accordance with Northwest Arctic Borough Ordinance 9.25.020 M., establishing standards of disposal of refuse, human body waste, and chemicals. All remedial activities shall comply with any and all other applicable state and federal laws, including all applicable hazardous waste and disposal requirements, all waste disposal and landfill requirements, and all open burning and air quality standards.
14. The applicant must conduct activities in a manner to maintain natural drainage pattern, water shed protection, and permafrost stability; to prevent runoff and erosion into water supplies; to minimize alteration of vegetation; and to conserve natural features and the general environment of the area.
15. Uses permitted shall cease upon the discovery of archaeological, prehistoric, historic or cultural resources during the project activities, and METALS shall immediately contact the Planning Director at the NAB to determine the conditions to continue.
16. All fuel/oil/hazardous substance storage, including waste oil, must meet all applicable state and federal containment laws. Any project fuel storage at the mineral exploration sites



shall meet all applicable state and federal containment laws to prevent fuel spills and protect against fire danger. If a spill occurs, it must be reported immediately to the Alaska Department of Environmental Conservation and the NAB Planning Department (at least within 24 hours). Appropriate spill kits and absorbent pads must be stored at the mineral exploration sites. Fuel/oil drums or other storage containers shall not be abandoned.

17. Project equipment servicing and fueling operations are prohibited within 100 feet of any surface water body, including any rivers, drainage channels, sloughs and lakes. Equipment must be monitored daily for hydraulic leaks. Project equipment shall not be abandoned.
18. Water intake for all project activities, including but not limited to the camp and drilling purposes, shall be centered and enclosed in a screened box designed to prevent fish entrapment, entrainment or injury. The effective screen opening shall not exceed $\frac{1}{4}$ inch. To reduce fish impingement on screened surfaces, water velocity at the screen/water interface shall not exceed .5 feet per second when the pump is operating.
19. METALS shall properly reclaim and complete site closure including any reclamation of drill, staging, landing and camp sites. This shall include removal of fuel, structures, equipment and supplies; and shall not abandoned any fuel, vehicles, camp buildings and/or structures.
20. METALS shall immediately notify the Borough (at least within 24 hours) of any change in the mineral exploration plans and seek modification of the permit.
21. At the completion of each season and overall completion of the project, erosion control measures shall be utilized to stabilize any exploration and/or drill hole sites. At a minimum, any disturbed areas must be re-graded to stable slopes that blend with the natural topography, maintain natural drainage, promote safety, and otherwise mitigate the effects of drilling. Within mean annual flood lines, re-grading to ground contours which will not entrap fish and not significantly alter the river/stream hydraulics will occur at the end of each operating season.
22. METALS is subject to all penalties and civil actions pursuant to section 9.08.240 for violation of the permit conditions and stipulations prescribed herein.
23. Annually by December 31st, the permittee shall file a written report with the NAB Planning Department, The City of Kobuk, and the Kobuk IRA Council describing the following:
 - (a) GPS coordinates of all drill holes,
 - (b) complete report of any fuel or other hazardous substances discharges and clean-up activities completed,
 - (c) description of any reclamation,
 - (d) report the incidents of caribou migration and dates/times of ceased operations for



- allowing migration of caribou, and
(e) other matters as reasonable required by the Administrator/NAB Planning Director.
24. At the conclusion of each season the Borough Planning Department shall evaluate the effectiveness of the permit conditions. The Title 9 Administrator shall be authorized to adopt corrective measures for ineffective or inadequate permit conditions.
 25. METALS and/or land owners shall allow the NAB and/or their representatives access to the permitted sites and properties, during the term of this permit or within 5 years after permit expiration, to conduct scheduled or unscheduled inspections to determine compliance with this permit or respond to emergency situations.
 26. The Borough Planning Director, as the Title 9 Administrator under provision of NABC 9.08.020, proposes to issue this permit for period of three (3) years. Issuance of this permit under these terms shall require submission of permit fees and annual reports for compliance with the permit terms and conditions. **This permit will expire on December 31, 2022,** unless revoked by the Title 9 Administrator and/or METALS.

Permit Approval

NORTHWEST ARCTIC BOROUGH

Conditional Use Permit Approved by the Northwest Arctic Borough Planning Commission through Resolution PC 20-04

Authorized signatory: Martha Siikauraq Whiting, Planning Director/Title 9 Administrator

June 4, 2020

Date

CC: Ambler Traditional Council, City of Ambler, Kobuk IRA Council, City of Kobuk, Shungnak IRA Council, City of Shungnak, NANA Regional Corporation, Maniilaq Association

Posted at: www.nwabor.org

**NORTHWEST ARCTIC BOROUGH PLANNING COMMISSION
RESOLUTION PC-20-04
A RESOLUTION OF THE NORTHWEST ARCTIC
BOROUGH PLANNING COMMISSION APPROVING
AMBLER METALS LLC'S
DRAFT CONDITIONAL USE PERMIT #110-03-20,
AND FOR RELATED PURPOSES**

WHEREAS: The Northwest Arctic Borough Planning Department received a Title 9 Permit Application (20-02-110) on March 2, 2020 from Ambler Metals LLC for the following Uses in the Village, Subsistence, and General Conservation Districts:

- Temporary use of airstrips,
- Mineral Exploration,
- Gravel extraction,
- Landfills,
- Airstrips,
- Bulk fuel storage,
- Roads,
- Archaeological surveys and excavation or other activities on a parcel by a professional archaeologist or other person that are likely to disturb archaeological or historic resources
- Exploration, assessment of examination of a parcel by a professional archaeologist or other qualified person; and

WHEREAS: On April 28, 2020, the Borough planning department deemed the application complete with all necessary information; and

WHEREAS: The Borough planning department has published a public notice for this permit on May 8, 2020, as required in borough code 9.20.030; and

WHEREAS: The Northwest Arctic Borough Planning Commission has the authority to approve: Bulk fuel storage, Gravel extraction, Landfills, and Roads in the Subsistence and General Conservation Districts by conditional use permit according to borough code 9.12.030 and 9.12.050, following a public hearing as required under borough code 9.20.030E.

NOW THEREFORE BE IT RESOLVED, The Northwest Arctic Borough Planning Commission hereby authorizes the Planning Director/Title 9 Administrator to approve the DRAFT Conditional Use Permit #110-03-20 dated May 8, 2020, as discussed during the commission meeting;

PASSED AND ADOPTED THIS 3rd DAY OF JUNE, 2020.



Harold Lambert, Planning Commission Chair

SIGNED AND ATTESTED TO THIS 3rd DAY OF JUNE, 2020.



Stella Atoruk, Borough Clerk